



The beauty of Fiji lies in its diversity - over 330 islands waiting to be explored. Captain Cook discovery cruises are designed to offer you an authentic and personal experience. The Yasawa Islands are situated off the north-west coast of the main island and being volcanic in origin, they offer some of the most dramatic scenery in the South Pacific. With a new island and coral reef to visit every morning and afternoon these cruises have a greater emphasis on beach and water activities. The 3-night cruise features the southern islands including the Waya and Sacred Islands. The 4-Night cruise explores the remote northern islands from Naviti to Yasawa including the famous Sawa-i-lau aquamarine limestone lagoon featured in the 1980 movie 'Blue Lagoon'. Combine both cruises for a total 7-Night Yasawa Islands cultural and island experience.



Inclusions • All meals (buffet & a la carte) • Daily island stopovers & water activities • Guided island, village & school tours • Snorkelling & glass bottom boat tours • Use of snorkelling equipment & mini gym • Tropical island lovo feast & kava ceremony • Entertainment • Child Minding (5-10yrs) and Nanny Services (under 5yrs) at selected times • 24 hour self-service tea & coffee bar • **Transfers at the end of your cruise from the ship to Nadi & Denarau hotels. Fares exclude transfers to the ship, drinks, optional tours & services.**

Bonus Features • Swimming pool, two top deck spa pools & sauna • Massage & beauty services (optional) • Scuba diving - certified & introductory (optional) • Mini-gym & meeting room • Easy access small boat launching platform • Choice of 3 accommodation levels • Friendly Fijian crew with a wealth of local knowledge • Mix of both male & female crew

Facilities: Swimming pool, two top deck spa pools, sauna and mini gym; glass-bottomed boat, snorkelling and dive vessels; two bars, two lounges and a single-sitting dining saloon; day spa, gift shop, chart house, library, guest laundry and 24 hour coffee and tea facilities. MV Reef Endeavour also features a lift from D Deck to Sun Deck (limited access).

Dining: Dining is a vital ingredient in your Fijian cruise. Whether it is an alfresco luncheon, a casual barbecue or table d'hote dinner, our food is prepared on board from fresh local and imported produce and our on-board entertainment adds a special flavour to the mix.

Accommodation: The MV Reef Endeavour has approximately 65 suites, staterooms & cabins. Please note Tabua Staterooms are currently being converted to Tabua Suites or Staterooms. Tabua Staterooms will not be available from April 12. Every cabin type features a private bathroom ensuite, internal telephone, on/off air-conditioning, hair dryer, 240 volt power, international shaver point, soaps, shampoo & towels serviced daily. Each cabin is approximately 14 sqm. Tabua Suites are approximately 28 sqm. Staterooms and Suites open onto the outside deck and have two windows. **Tabua Suites (4)** feature a bedroom (twin/double) with ensuite bathroom, plus a separate day room with chair, settee, desk, TV & DVD player, refrigerator, tea & coffee facilities and second bathroom. **Tabua Staterooms (6)** are located on the Upper Deck (twin/double). **Connecting Family Staterooms (2)** are located on the upper or main decks (twin/double). **Staterooms (40)** are located on the main decks (twin/double). **Cabins (11)** with portholes, open onto an inside passageway (twin/double/bunk triple/bunk quad).

3-Night - Southern Yasawa Islands Cruise

Departs: Saturday 1.00pm (**Luggage check-in 9am-12 noon**). Returns: Tuesday 9.00am

On this short introduction to Fiji you'll discover the beauty of the Southern Yasawa Island Group and the overwhelming friendly warmth of its people.

4-Night - Northern Yasawa Islands Cruise

Departs: Tuesday 1.00pm (**Luggage check-in 9am-12noon**). Returns: Saturday 9.00am

This journey to sheltered bays and islands in the remote Northern Yasawa Group is everyone's tropical island dream – long white beaches, turquoise bays and colourful coral reefs.

7-Night - Discovery Yasawa Islands Cruise

Depart: Tuesday & Saturday 1.00pm (**Luggage check-in 9am-12 noon**). Return: Tuesday & Saturday 9.00am

This combination of both three and four night cruises brings together every fascinating experience of the Yasawa Islands from the north to the south, from culture to nature. Between departures you can enjoy a choice of complimentary tours.

7-Night – Discovery Northern Fiji Cruises Departing the 1st Tuesday of each month **from Lautoka** (see separate fact sheets for details). Choice of Heritage or Cultural Cruises. On the Heritage Cruise you'll visit places without postcards as you embark on an adventure from the south-west coast of the main island to the remote Taveuni and Vanua Levu and across the 180th meridian. On the Cultural Cruise circumnavigate Vanua Levu – Fiji's second's largest island - and explore the islands, rivers and rainforests of the remote north.

Itineraries subject to change due to weather and other operational requirements.

Discovery Yasawa Islands Cruise – 3, 4 & 7-Nights – Denarau/Denarau (Tue & Sat) weekly

The Yasawa Islands are situated off the north-west coast of the main island and being volcanic in origin, they offer some of the most dramatic scenery in the South Pacific.

- **Departs Port Denarau 1.00pm – Luggage Check-in between 9am – 12 noon. Port Denarau has a wide range of retail outlets, bars and restaurants**
- Disembark Denarau Marina 9.00am

Activities – all cruises	Highlights
Village visit	✓ Long white beaches, turquoise waters and coral reefs
School tour	✓ Snorkelling, glass bottom boat & scuba diving opportunities every morning & afternoon
Meke & lovo feast	✓ Meet the children and elders of an island village & school
Sevusevu ceremony	✓ Handicraft, flower & shell market
Shell & handicraft market	✓ Special village choral church service (Sun)
Coral reef snorkelling & glass bottom boat tours	✓ Captain's Welcome Cocktails & Dinner
Guided island walks	✓ Island Night, kava, meke & lovo feast
Daily water activities	
Minimum of 2 dive sites per cruise	
Onboard games	
Nightly entertainment	
Captain's Welcome Dinner	
Choral church service (3-Night only)	

4-Night Northern Yasawa Cruise

Departs: Tuesday 1.00pm (**Luggage check-in 9am-12 noon**). Returns: Saturday 9.00am
Cruises depart & return Denarau Marina Nadi

This journey to sheltered bays and islands in the remote Northern Yasawa Group is everyone's tropical island dream – long white beaches, turquoise bays and colourful coral reefs.

The cruise begins with a visit to the private island of Tivua where you can swim, explore and relax before our Welcome Dinner. Over the next four days you will explore a thriving island village, visit a handicraft market and experience the culture first hand at the meke and lovo feast. As you cruise this spectacular passage from Yaqeta Island to the Yasaawa's northern reaches, the vista is ever changing. From long tranquil aquamarine lagoons to imposing volcanic peaks, the Northern Yasawa Islands reveal Fiji's true natural beauty. The special Pacific Island night and lovo feast perfect your Fiji island adventure.

3-Night Southern Yasawa Cruise

Departs: Saturday 1.00pm (**Luggage check-in 9am-12 noon**). Returns: Tuesday 9.00am
Cruises depart & return Denarau Marina Nadi

On this short introduction to Fiji you'll discover the beauty of the Southern Yasawa Island Group and the overwhelming friendly warmth of its people.

The pristine islands of Waya, Naviti and Viwa boast some of the most beautiful beaches, coral reefs and sand cays in Fiji. On our journey through the Southern Yasawa Islands you'll experience a traditional village sevusevu ceremony and meet the children of an island school. Music and song is an integral part of Fijian life and the special choral church service on Sunday is an unforgettable experience. Swimming, snorkelling, beach combing and glass bottom boat tours complete your daily list of activities giving you the freedom to do as much or as little as you like.

7-Night Discovery Yasawa Islands Cruise

Depart: Tuesday & Saturday 1.00pm (**Luggage check-in 9am-12 noon**). Return: Tuesday & Saturday 9.00am
Cruises depart & return Denarau Marina Nadi

This combination of both three and four night cruises brings together every fascinating experience of the Yasawa Islands from the north to the south, from culture to nature. Between departures you can enjoy a choice of complimentary tours.

* Itineraries subject to change due to weather and other operational requirements

Getting to your cruise

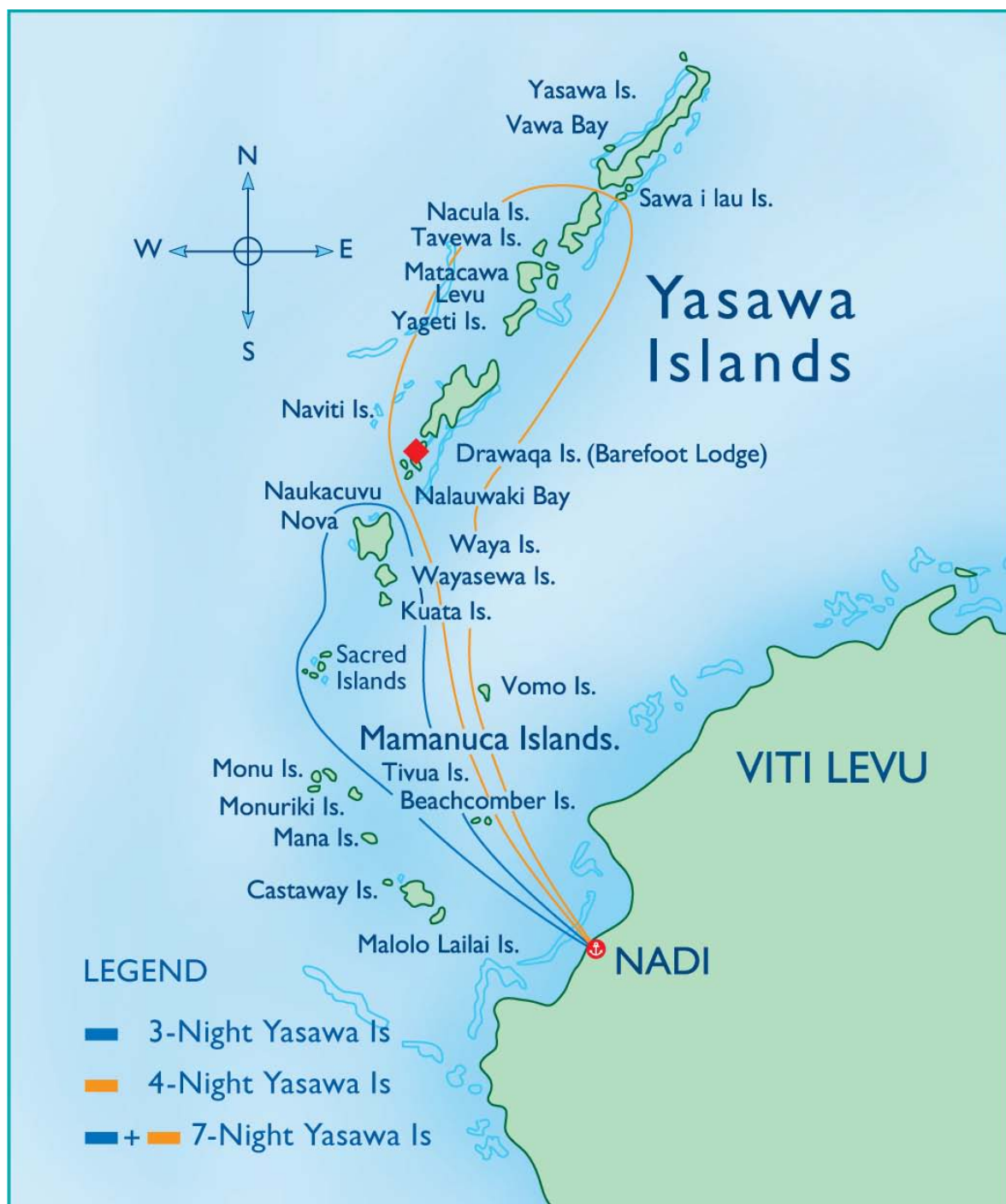
- From 02 January 2012 all passengers are required to make their own way to the ship. On arrival in Fiji please visit or telephone one of our Fiji Offices to reconfirm your booking. Our Nadi Airport Office is centrally located at the Arrivals Concourse and can assist with visitor information.

Fiji Offices

- Port Denarau - Cruise Counter: Daily 8am–9pm – Reservations Ph 675 0504
- Port Denarau – Central Reservations & Administration Office: Daily 8am-5pm – Res Ph 670 1823
- Nadi Airport – Arrivals Concourse: Daily 5am-9pm – Reservations Ph 672 2026 or 672 2027

Taxis are readily available from Nadi Airport and most Nadi/Denarau hotels.

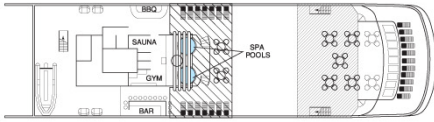
- Airport to Lautoka – taxi approx FJ\$30 / 30 minutes
- Airport to Denarau – taxi approx FJ\$25 / 30 minutes
- Airport to Nadi – taxi approx FJ\$20 / 20 minutes
- Nadi to Lautoka – taxi approx FJ\$40 / 40 minutes
- Nadi to Denarau – taxi approx FJ\$20 / 10 minutes
- Denarau to Lautoka – taxi approx FJ\$45 / 45 minutes



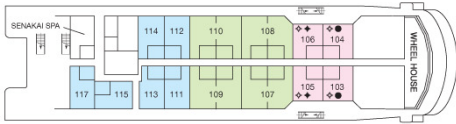
Map is indicative only and subject to change.

REEF ENDEAVOUR

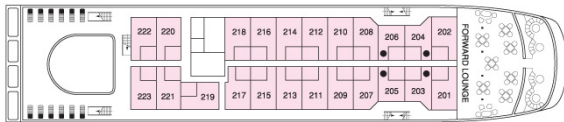
SUN DECK



A DECK TOP DECK



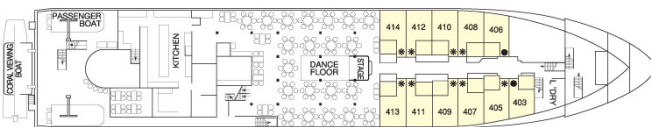
B DECK



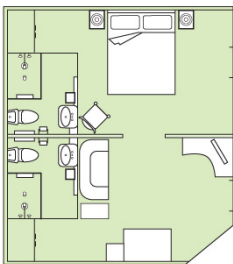
C DECK



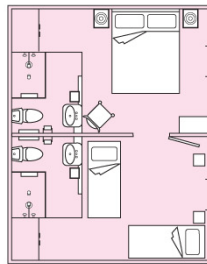
D DECK



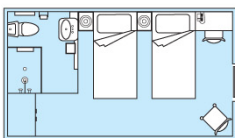
TABUA SUITE



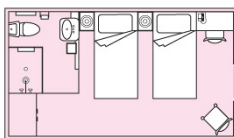
CONNECTING FAMILY STATEROOM



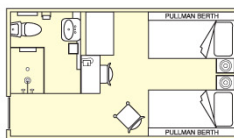
TABUA STATEROOM



STATEROOM



CABIN



LEGEND

All rooms have twin beds convertible to double bed unless indicated as follows:

- Double bed
- * Family Cabins – twin single beds plus two upper Pullman berths
- ◆ Twin beds
- ◇ Connecting Family Staterooms

Deck plans and room configurations are indicative only and subject to change